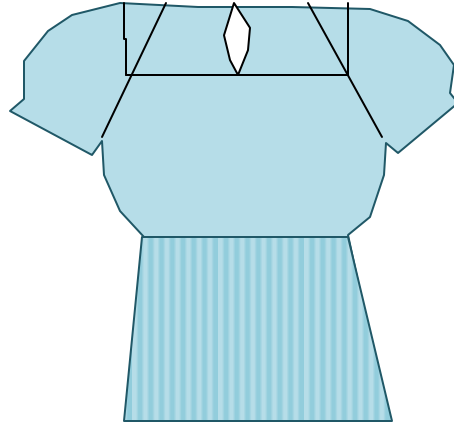


3 Hour Sweater



Yarn: Berroco Vintage (3 skeins)

Needles: US size 7

Gauge:

- 5 sts x 7 sts = 1 inch
- 20 x 28 in St st = 4 inches

Ease: Negative 1 inch of ease

Measurements:

Neck (6.5, 2.5, 6.5, 2.5) total: 18 inches

Stitches: 32.5, 12.5, 32.5, 12.5 – Cast on 88 stitches: 32, 12, 32, 12

Upper bust: 36 inches (180 stitches)

Under bust: 34 inches (170 stitches)

Sleeve: 12 inches (add 2 inches ease): 78 stitches at fullest/ around 60 at lowest

Rows 1-20 (upper yoke)

CO 16 stitches (right front), PM, CO 12 stitches (right sleeve), PM, CO 32 sts, PM, CO 12 stitches (left sleeve), PM, CO 16 stitches (left front);

Row 1 (WS row): Sl1, [p2, k2]* to last 3 sts, p3 (turn)

***Continue as such for all WS rows until joining for working in the round*

Row 2 (increase row): Sl1, [[work in pattern (knit all k sts, purl all p sts)* to 1 stitch before marker, M1F, p1, Sl m, p1, M1B]*(4x); [work in pattern]* to end; (turn)

Row 3: work in pattern (WS)

*** Repeat rows 2 & 3 until item measures 2 ¾ inches, end after RS row(Row 20)*

Rows 21 – 22 (sleeve increase)

Row 21: Sl1, M1, [work in pattern]* to 4 stitches remaining, k2, p1, M1, p1, CO 1 st, pm (this is center front and beginning of the row from this point on), CO1 st, join for working in round

Row 22 (Join row/puff sleeves row): Knit all stitches to 1 stitch before left sleeve marker, M1, k1, SIM, k1, M1, k7, [kf&b&f&b, k2]*(6x), k5, M1, k1, SIM, knit all back stitches, repeat increase sequence for other sleeve, knit all stitches to center front. (there are now 52 sleeve stitches and 54 body stitches – each side);

Rows 23 – 50 (continuing yoke)

Odd rows: K around, slipping markers when needed

Even rows: [K to 1 stitch before marker, M1, k1, SIM, k1, M1] * (4x), knit to end

Rows 51 – 58 (Decreasing sleeves)

Row 51 (and all WS rows): K around, slipping markers when needed;

Row 52: K to 1 stitch before first sleeve marker, M1, K1, SIM, K1, M1, k17, [k2tog, k4]*(8x), k to 1 stitch before marker, m1, k1, sLM, k1, m1, k to 1 stitch before marker, m1, k1, sLM, k1, m1, k17, [k2tog, k4]*(8x), k to 1 stitch before marker, m1, k1, sLM, k1, m1, k to end of round.

Row 54: K to 1 stitch before first sleeve marker, M1, K1, SIM, K1, M1, k18, [k2tog, k3]*(8x), k to 1 stitch before marker, m1, k1, sLM, k1, m1, k to 1 stitch before marker, m1, k1, sLM, k1, m1, k18, [k2tog, k3]*(8x), k to 1 stitch before marker, m1, k1, sLM, k1, m1, k to end of round.

Row 56: K to 1 stitch before first sleeve marker, M1, K1, SIM, K1, M1, k19, [k2tog, k2]*(8x), k to 1 stitch before marker, m1, k1, sLM, k1, m1, k to 1 stitch before marker, m1, k1, sLM, k1, m1, k19, [k2tog, k2]*(8x), k to 1 stitch before marker, m1, k1, sLM, k1, m1, k to end of round.

Row 58: [K to 1 stitch before marker, M1, k1, SIM, k1, M1] * (4x), knit to end

Row 59: K to sleeve marker, Slip sleeve stitches onto holder, CO 1 stitch, PM, CO 1 stitch, join to knit body, knit to sleeve marker, slip sleeve stitches onto holder, CO1 stitch, PM, CO 1 stitch, join to knit body.

*** 90 stitches each for body sections, place sleeve stitches on holder, join body sections for working in the round, cast on 2 stitches in each underarm (188 stitches). Now may also be a good time to move the markers to the center of the underarm.

Body:

Continue knitting in Stockinette stitch (knit every stitch) until piece measures 1 inch from underarm.

Short rows for size 36C bust (optional)

Next Row:

Knit to two stitches before 2nd marker, wrap next stitch, turn work;

Purl to 2 stitches before marker, Wrap next stitch, turn;

Knit to 3 stitches before marker, wrap stitch, turn;

Purl to 3 stitches before marker, wrap stitch, turn;

Knit to 4 stitches before marker, wrap stitch, turn;

Purl to 4 stitches before marker, wrap stitch, turn;

Knit to 5 stitches before marker, wrap stitch, turn;

Purl to 5 stitches before marker, wrap stitch, turn;

Knit to 6 stitches before marker, wrap stitch, turn;

Purl to 6 stitches before marker, wrap stitch, turn;

Continue knitting in rounds – when knitting a wrapped stitch, pick up the wrap and knit it with the stitch.

Continue knitting in Stockinette stitch until piece measures 4.5 inches from underarm.

Transition to lower body:

Decrease rows: [Knit to 3 stitches before underarm marker, k2tog, k1, SIM, k1, k2tog, knit to 3 stitches before underarm marker, k2tog, k1, SIM, k1, k2tog, k to end. Knit 1 round without shaping, slipping all markers.] * repeat (3x) - 172 stitches

Continue in k2, p2 rib until piece is desired length.

Bind off all stitches in rib.

Finishing sleeves:

Pick up 64 held stitches and join for knitting in the round. Work 5 rows in k2, p2 rib. Bind off in rib.

Sew underarm seams, weave in ends and block.

You're done!